

## **7.1: Institutional Values and Social Responsibilities**

**7.1.1: Institution has a stated energy policy streamlining ways of energy conservation, use of alternate sources of energy for meeting its power requirements**

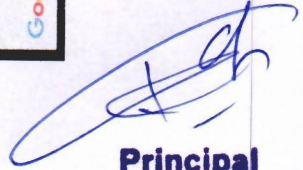
**Institution energy policy document**



**7.1.1 Institution has a stated energy policy streamlining ways of energy conservation, use of alternate sources of energy for meeting its power requirements**

**UPS POWER INVERTER:**



  
**Principal**  
**Sahayog Sevabhavi Sanstha**  
**College of Education**  
**Vishnupuri, Nanded.**

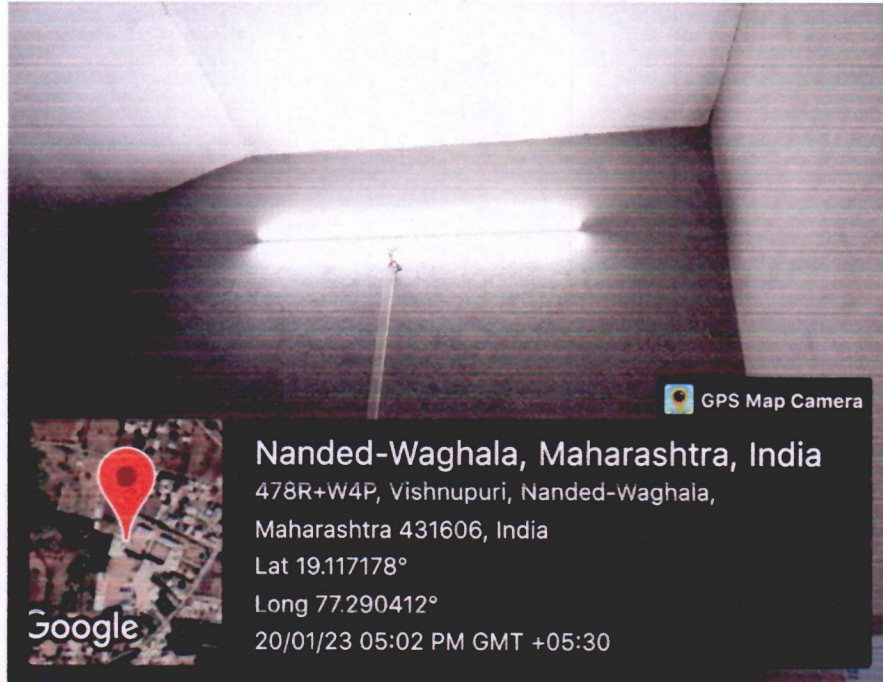




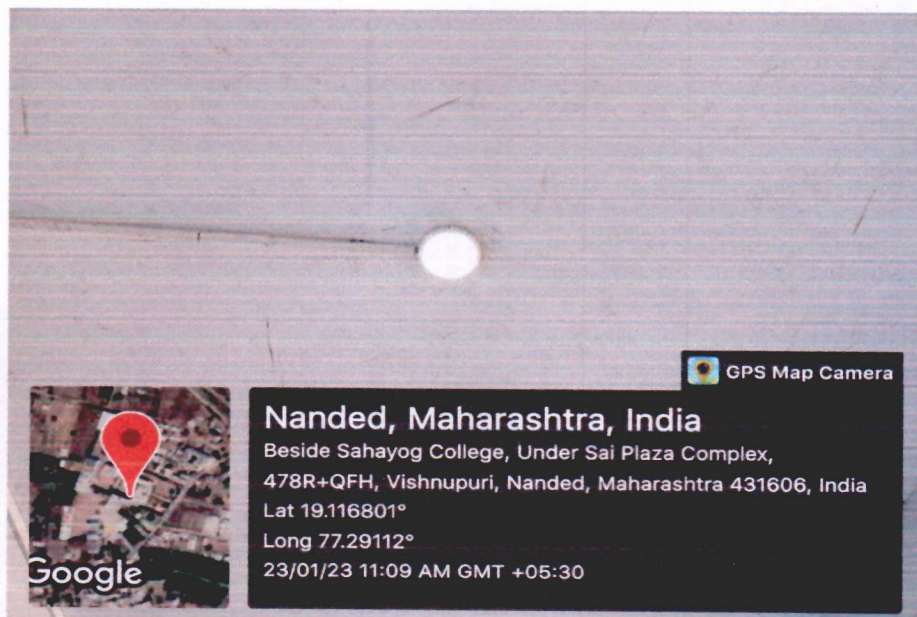
Sahayog Sevabhavi Sanstha's  
**COLLEGE OF EDUCATION AND**  
**INDIRA COLLEGE OF EDUCATION VISHNUPURI, NANDED**  
Sahayog Educational Campus, Vishnupuri, Nanded-431606




**LED TUBE:**



**LED BULB:**



  
**Principal**  
**Sahayog Sevabhavi Sanstha**  
**College of Education**  
**Vishnupuri, Nanded.**

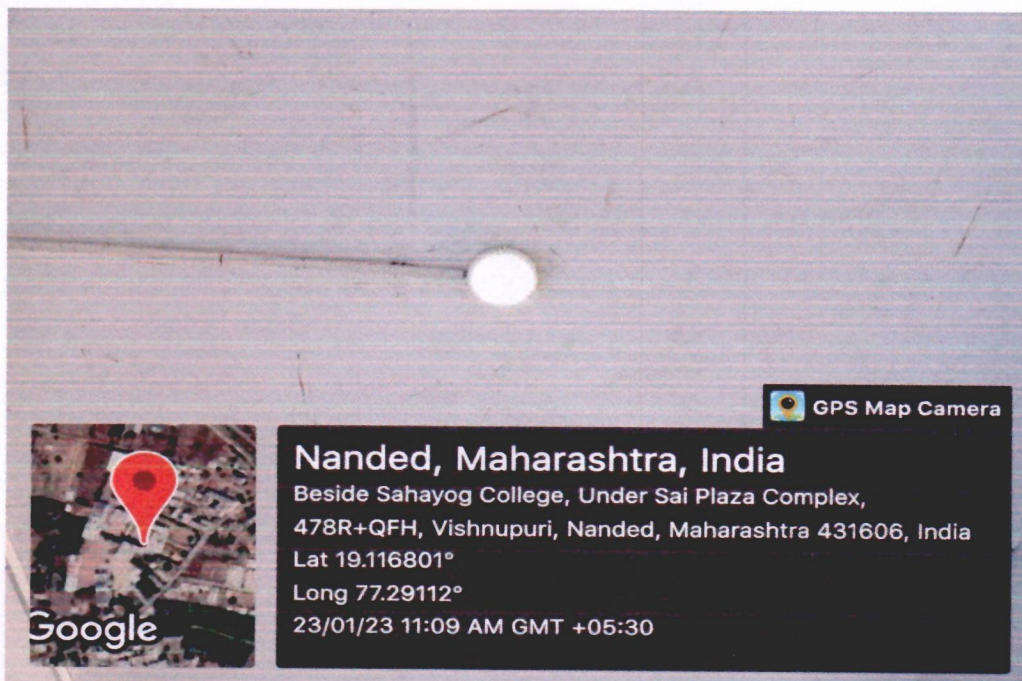





Sahayog Sevabhavi Sanstha's  
**COLLEGE OF EDUCATION AND**  
**INDIRA COLLEGE OF EDUCATION VISHNUPURI, NANDED**  
Sahayog Educational Campus, Vishnupuri, Nanded-431606



**SENSOR BASED LED LIGHTS:**



  
**Principal**  
Sahayog Sevabhavi Sanstha  
College of Education  
Vishnupuri, Nanded.

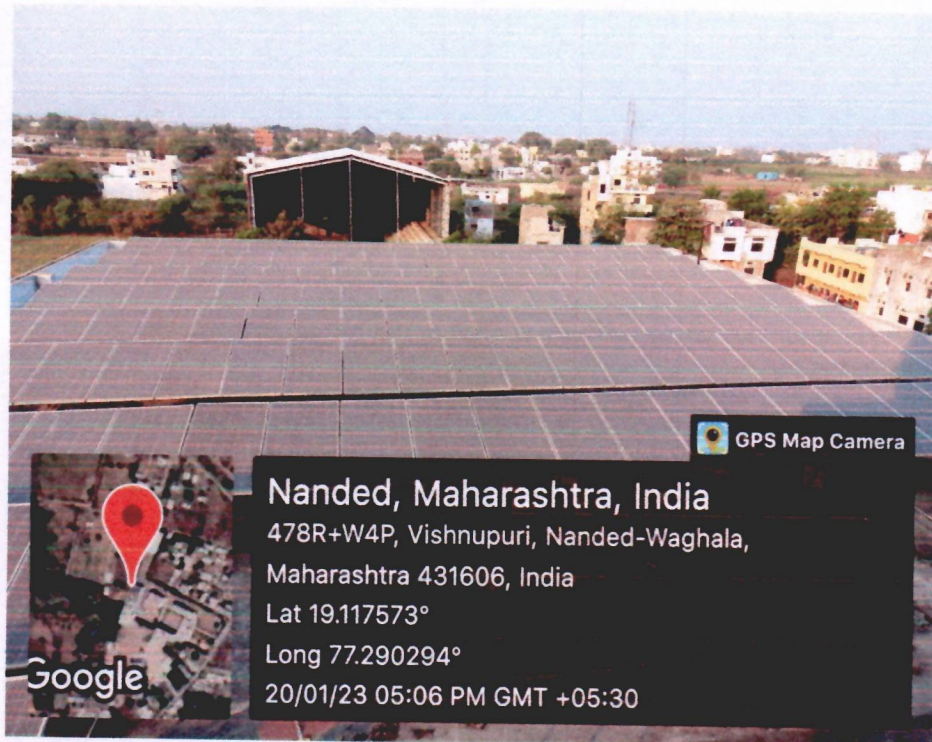
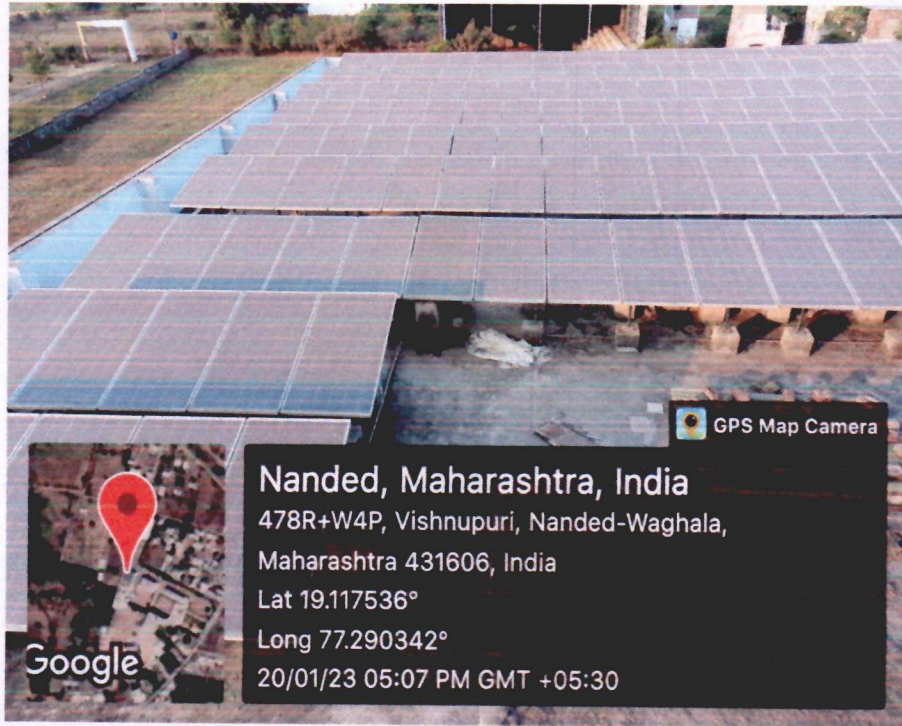


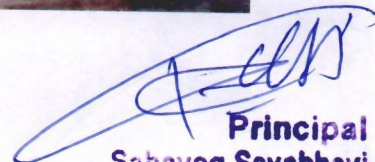


Sahayog Sevabhavi Sanstha's  
**COLLEGE OF EDUCATION AND**  
**INDIRA COLLEGE OF EDUCATION VISHNUPURI, NANDED**  
Sahayog Educational Campus, Vishnupuri, Nanded-431606



**SOLAR ENERGY 25 KV PLANT:**





**Principal**  
**Sahayog Sevabhavi Sanstha**  
**College of Education**  
**Vishnupuri, Nanded.**